



beverly may™
HAIR

CARING FOR YOUR SYNTHETIC WIG

To watch our care video, visit
<http://bit.ly/careforsyntheticwig>

Follow Us At

 @beverlymayhair

 www.facebook.com/beverlymayhair/

[HTTPS://BEVERLYMAY.COM.AU/](https://beverlymay.com.au/)



WASH YOUR WIG

EVERY 6-8 WEARS

Synthetic wigs tend to frizz in areas that come into contact with skin (eg. nape of your neck), to help prevent this from happening spray wig with Ghost Mist every second day

WASHING



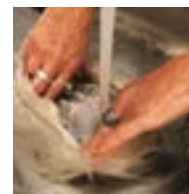
1. Before washing your wig or hairpiece, gently remove any tangles with your wide tooth comb. Take care with the delicate lace front!

2. In a basin with cool water add a small amount of a Synthetic Wig Shampoo and emulsify.



3. Place your wig in hair first, like a 'boat'. Immerse your wig in water and gently comb with a wide tooth comb, ensuring that the hair is traveling in the same direction. DO NOT rub the hair, this may cause knotting.

4. Rinse thoroughly in cool water until water runs clear. Only brush your Wig or Hair Piece when it is completely dry. If hair is damp to wet use a wide tooth comb. Brushing should be done carefully to avoid root tension.

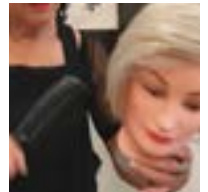


DRYING



1. Wrap wig or hairpiece in a towel and lightly squeeze to remove excess water.

2. Gently detangle hair using your wide tooth comb.



3. Spray with Leave-In Conditioning Spray (3-5 pumps).

4. Place on a mannequin head. Secure with T-pins through the velvet ear tabs on the side, ensuring that they do not go through the mesh. Lightly spritz with Ghost Mist Spray and smooth back into the original shape; allow to air dry completely.

